

Hymn

Keep on Believing

Piano Sheet Music / Guitar Sheet Music

聖歌

堅定的相信

鋼琴樂譜 / 簡譜 / 吉他樂譜



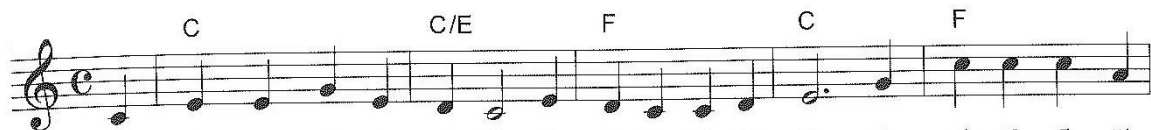
風火網頁 Webpage: <https://www.feng-huo.ch/>

Date: May 21, 2023

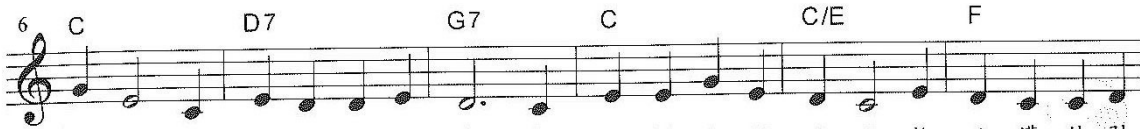


54 堅定相信 Keep On Believing

詞/曲: Frank C. Huston 譯: 劉福群/何統雄 編: 余遠萍



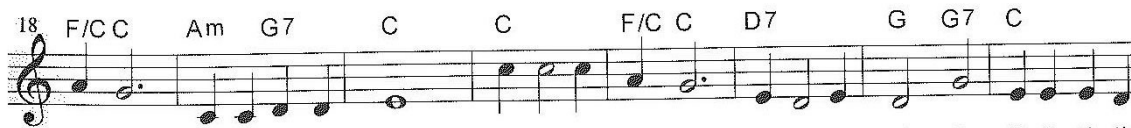
有時黑影來遮掩, 濃霧隱蔽前路; 有時黑雲增
 有時道路甚荒涼, 孤單獨行淒苦; 已忘記慈悲
 你若愁苦壓心頭, 背負重擔難受; 路途縱崎嶇
 Some - times, the sha - dows gath - er, And mists ob - scure the way; Some - times, the clouds grow
 Some - times, the way is drear - y, We seem to walk a - lone. For - get - ting that the
 O soul, weighed down with sor - row, Be - neath a heav - y load, Re - mem - ber God will



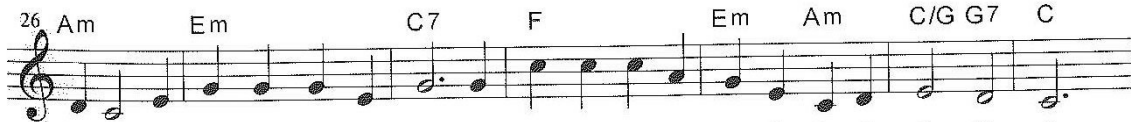
無已, 白晝竟亦似暮, 當記得我們天父, 祂必護佑引
 天父, 祂必保守看顧, 多少憂傷冤枉受, 都因信心缺
 難走, 記住神必護佑, 祂恩典必夠你用, 足可忍受煩
 heav - y, And dark - en all the day. How pre - cious to re - mem - ber Our Fa - ther's lov - ing
 Fa - ther Keeps watch a - bove His own. How man - y need - less sor - rows The faith - less have to
 help you, How - ev - er rough the road. His grace is still suf - fi - cient For ev - 'ry load of



導; 神仍愛祂的兒女, 祂垂聽禱告。
 少; 神仍愛祂的兒女, 祂垂聽禱告。
 惱, 神仍愛祂的兒女, 祂垂聽禱告。 堅定的
 care, That He still loves His chil - dren, And He an - swers prayer. Keep on be -
 bear, For, God still loves His chil - dren, And He an - swers prayer.
 care, God ev - er loves His chil - dren, And He an - swers prayer.

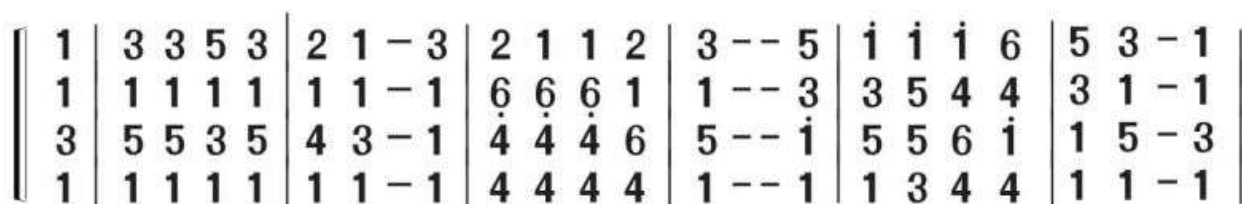


相信, 神垂聽禱告; 堅定的相信, 不要失望; 你擔子雖然
 liev - ing, God will an - swer prayer; Keep on be - liev - ing, nev - er de - spair; Tho' you be heav - y -

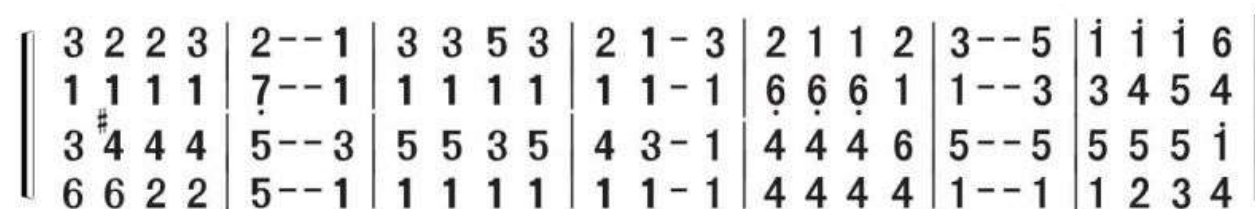


極重, 愁苦又壓心頭, 神仍然看顧引導, 祂垂聽禱告。
 lad - en, And bur - dened down with care, Re - mem - ber God still loves you, And He an - swers prayer.

1 = ^bD $\frac{4}{4}$

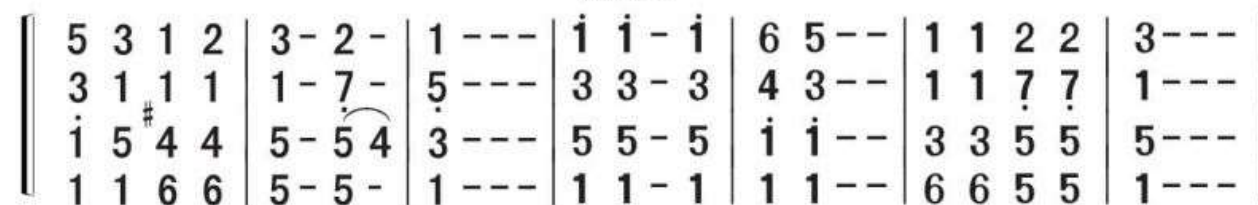


1. 有时黑影遮盖我，迷雾蔽锁路途，乌云密集难消散，白
 2. 有时道路甚荒凉，深觉孤单难行，忘却了慈悲天父，看
 3. 若有愁苦压心头，背负重担难受，路途虽崎岖难走，相

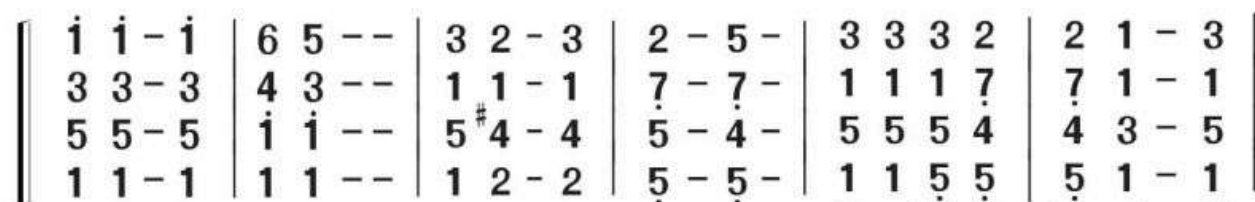


1. 昼竟似夜幕。当信靠全能天父，祂慈爱的看顾，祂仍爱祂的
 2. 顾属祂的人。多少忧伤枉然受，都因失去信靠，祂仍爱祂的
 3. 信父必保佑。祂的恩典够我用，足以胜过烦恼，祂仍爱祂的

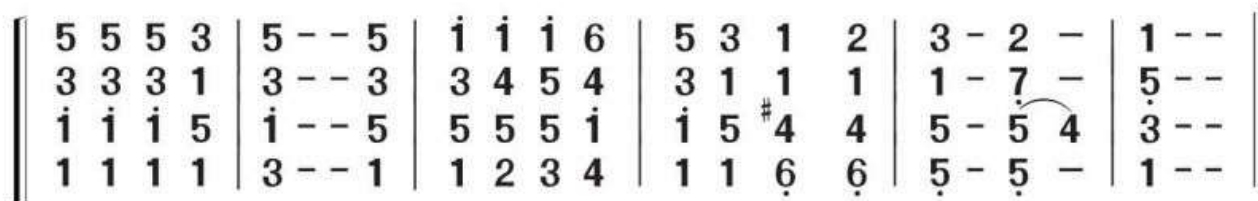
(副歌)



1. 儿女垂听我祷告！
 2. 儿女垂听我祷告！ 坚定地相信，父听我祷告！
 3. 儿女垂听我祷告！



坚定地相信，不要失望！我担子虽然沉重，愁



苦紧压心头，相信天父永远是爱，垂听祷告。

1 | 3 3 5 3 | 2 1 - 3 | 2 1 1 2 | 3 - - 5 | $\dot{1}$ $\dot{1}$ $\dot{1}$
 有时黑影遮盖我, 烟雾蔽锁路途, 乌云浓集
 有时道路甚荒凉, 深觉孤单难行, 忘却了慈
 若有愁苦压心头, 背负重担难受, 路途虽崎

6 | 5 3 - 1 | 3 2 2 3 | 2 - - 1 | 3 3 5 3 | 2 1 -
 难消散, 白昼竟似夜幕。 当信靠全能天父,
 悲天父, 看顾属他的人; 多少忧伤枉然受,
 岖难走, 记住神必保佑; 他的恩典够我用,

3 | 2 1 1 2 | 3 - - 5 | $\dot{1}$ $\dot{1}$ $\dot{1}$ 6 | 5 3 1 2 | 3 - 2 - | 1 - - - |
 他慈爱的看顾, 他仍爱他的儿女, 垂听我祷告!
 都因失去信靠, 他仍爱他的儿女, 垂听我祷告!
 足以胜过烦恼, 他仍爱他的儿女, 垂听我祷告!

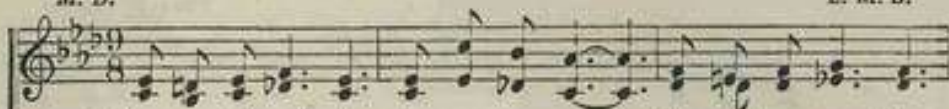
$\dot{1}$ $\dot{1}$ - $\dot{1}$ | 6 5 - - | 1 1 2 2 | 3 - - - | $\dot{1}$ $\dot{1}$ - $\dot{1}$ | 6 5 - - |
 坚定地相信, 神听我祷告! 坚定地相信,

3 2 - 3 | 2 - 5 - | 3 3 3 2 | 2 1 - 3 | 5 5 5 3 |
 不要失望! 我担子虽然沉重, 愁苦紧压心

5 - - 5 | $\dot{1}$ $\dot{1}$ $\dot{1}$ 6 | 5 3 1 2 | 3 - 2 - | 1 - - ||
 头, 要记住神永远是爱, 垂听祷告!

M. D.

L. M. B.



1. When you feel weak - est, dan - gers sur - round; Sub - tle temp - ta - tions,
 2. If all were eas - y, if all were bright, Where would the cross be?
 3. God is your wis - dom; God is your might; God's ev - er near you,
 4. Let us press on then; nev - er de - spair:— Live a - bove feel - ing,



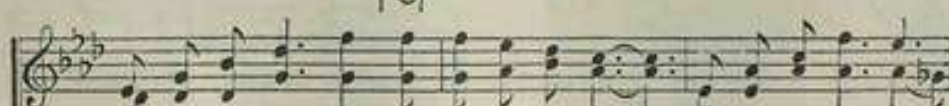
troub - les a - bound; Noth - ing seems hope - ful, noth - ing seems glad, All is de -
 where would the fight? But in the hard - ness, God gives to you, Chances for -
 guid - ing you right; He un - der - stands you, knows all your need, Trusting in
 vic - to - ry's there; Je - sus can keep us so near to Him, That nev - er



CHORUS.



spair - ing, oft - en - times sad.
 prov - ing what He can do. 1. Keep on be - liev - ing, Je - sus is near,
 Him, you'll sure - ly suc - ceed. 2. Keep on re - joic - ing, Je - sus is near,
 more our faith shall grow dim.

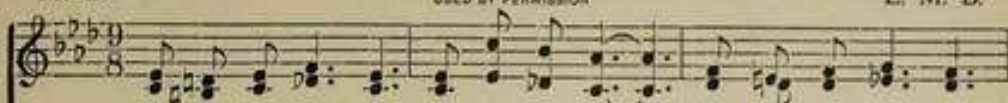


Keep on be - liev - ing, there's noth - ing to fear; Keep on be - liev - ing,
 Keep on re - joic - ing, there's noth - ing to fear; Keep on re - joic - ing,



this is the way, Faith in the night as well as the day.
 this is the way Songs in the night as well as the day.

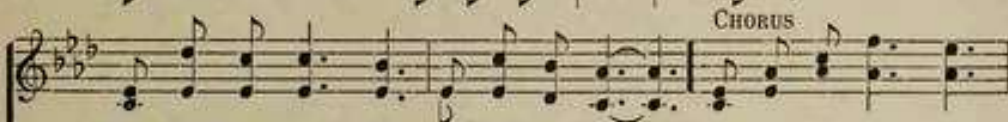




1. When you feel weak - est, dan - gers a - round; Sub - tle temp - ta - tions;
2. If all were eas - y, if all were bright, Where would the cross be?
3. God is your wis - dom; God is your might; God ev - er near you,
4. Let us press on then, nev - er de - spair; Live a - bove feel - ing,



trou - bles a - bound; Noth - ing seems hope - ful, noth - ing seems glad;
where would the fight? But in the hard - ness, God gives to you,
guid - ing you right; He un - der - stands you, knows all your need,
vic - to - ry's there; Je - sus can keep us so near to Him,

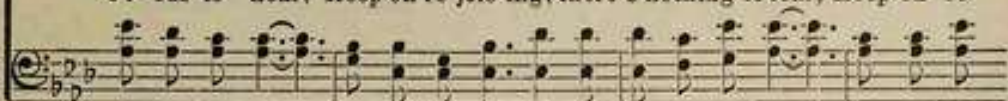


CHORUS

All is de - spair - ing, oft - en - times sad:
Chanc - es for prov - ing what He can do. 1. Keep on be - liev - ing,
Trust - ing in Him you'll sure - ly suc - ceed. 2. Keep on re - joic - ing,
That nev - er - more our faith shall grow dim.



Je - sus is near, Keep on be - liev - ing, there's nothing to fear; Keep on be -
Je - sus is near, Keep on re - joic - ing, there's nothing to fear; Keep on re -



liev - ing, This is the way, Faith in the night as well as the day.
joic - ing, This is the way, Songs in the night as well as the day.



No. 9.

Keep On Believing.

M. D.

COPYRIGHT, 1901, BY MAY AGNEW STEPHENS.
USED BY PER.

L. M. B.

Con espress.



1. When you feel weak-est, dan-gers sur - round; Sub - tle temp-ta-tions,
2. If all were ea - sy, if all were bright, Where would the cross be?
3. God is your wis-dom; God is your might; God's ev - er near you
4. Let us press on then; nev - er des - pair; Live a -bove feel-ing,



troub-les a - bound; Noth-ing seems hope-ful, noth-ing seems glad,
where would the fight? But in the hard-ness, God gives to you,
guid - ing you right; He un - der-stands you, knows all you need:
vic - to - ry's there; Je - sus can keep us so near to Him,



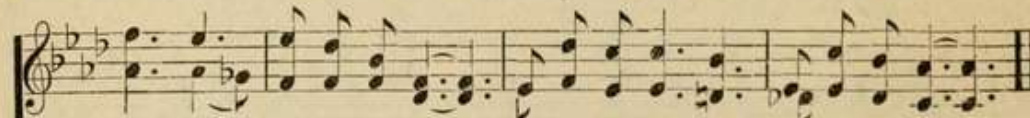
CHORUS.



All is de-spair - ing, oft - en times sad. 1. Keep on be - liev-ing,
Chan-ces for prov - ing what He can do.
Trust-ing in Him you'll sure - ly suc - ceed, 2. Keep on *re-joic-ing*,
That nev - er-more our faith shall grow dim.



Je - sus is near, Keep on be-liev-ing, there's nothing to fear; Keep on be-



liev - ing, this is the way, Faith in the night as well as the day.



Keep On Believing

from www.traditionalmusic.co.uk

SA #:773

Author: Lucy Milward Booth-Hellberg

Copyright:Public Domain

CCLI Song No.:5282519

Topic:Faith and Trust

Tunes:Keep On Believing, Blessed Assurance

Verse 1

When you feel weakest, dangers surround,
Subtle temptations, troubles abound,
Nothing seems hopeful, nothing seems glad,
All is despairing, everything sad:

Chorus

Keep on believing, Jesus is near;
Keep on believing, there's nothing to fear;
Keep on believing, this is the way;
Faith in the night as well as the day.

Verse 2

If all were easy, if all were bright,
Where would the cross be, and where the fight?
But in the hardness, God gives to you
Chances of proving that you are true.

Verse 3

God is your wisdom, God is your might,
God's ever near you, guiding aright;
He understands you, knows all you need;
Trusting in him you'll surely succeed.

Verse 4

Let us press on then, never despair,
Live above feeling, victory's there;
Jesus can keep us so near to him
That nevermore our faith shall grow dim.